

Experiences & Outcomes:

SCN 0-15a

TCH 0-09a

Developing the Young Workforce:

CES: I can role play different jobs.

Structural Engineer: Structural engineers specialise in designing the framework and foundations of structures such as bridges, sports stadia, masts, tower blocks and coastal and offshore oil platforms. They ensure the structures can withstand forces such as machinery, traffic, storms and earthquakes.

Carpenter: A joiner or carpenter makes and repairs wooden structures or objects, such as stairs, doors, window frames, items of furniture or kitchens, on a building site, in a workshop or commercial and residential properties.

Resources:

Junk modelling materials

Cardboard

String

Electrical objects

Activity:

Tower Time

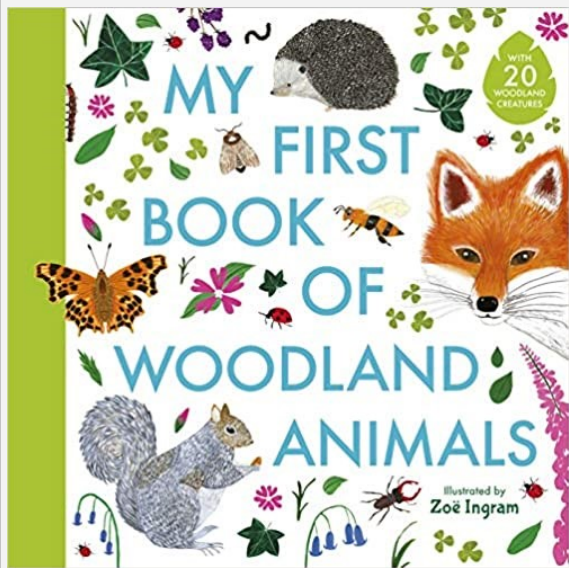
Investigate different types of towers/buildings from the past then create a freestanding tower by junk modelling.

The Power Of...

Sort and categorise the objects in the book based on their power source e.g. mains electricity, batteries, solar cells etc. Then try looking around the classroom and doing the same.

Sleep Tight

Select the best material/s to create a bed that would hold Inch and/or Grub.



Experiences & Outcomes:

SCN 0-01a
MTH 0-11a
MTH 0-19a

Developing the Young Workforce:

CES: *I can communicate with people about different jobs they do in the community.*

Environmental Consultant: They work on areas such as the effects of new developments on the environment, the control of pollution and noise, the effects of agriculture or recreation on plants and wildlife, the effect of climate change and waste management and recycling.

Conservationist: They are responsible for the practical management of the countryside. They develop policies to preserve and protect areas such as woodlands, fields, rivers, mountains, forests or coastal areas, to develop awareness and understanding and to encourage visitors.

Resources:

Sticks
Mirrors
Paper
Coloured pencils
Sorting boxes/hula hoops

Activity:

Walking in their Footsteps

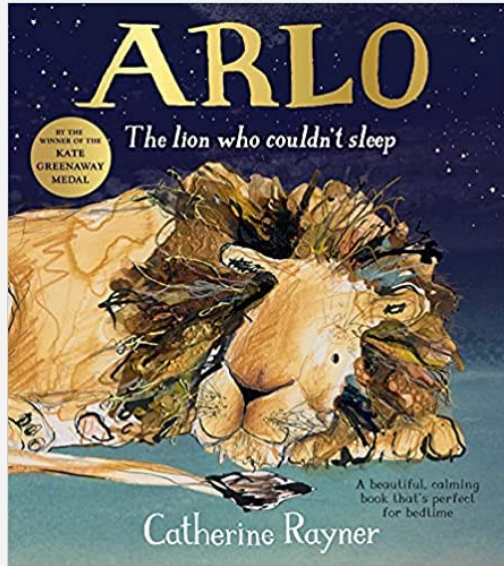
Choose a woodland animal and research their footprint then go outside and recreate it. Can you guess which footprint matches which animal?

Seeing Double

Create symmetrical pictures of the animals found in the woodland e.g. butterflies, moths, ladybirds etc.

Categories

Sort the woodland animals into the different categories based on their characteristics, justify the categories. What do you notice?



Experiences & Outcomes:

SCN 0-06a

MNU 0-10a

TCH 0-04b

TCH 0-04c

Developing the Young Workforce:

CES: *I believe I can do any job.*

Astronomer: Astronomers or astrophysicists study the universe to help us understand the physical matter and processes in our own solar system and other galaxies. It involves studying large objects, such as planets, as well as tiny particles. They may specialise in a particular area, for example tracking the position and movement of space objects or how galaxies are formed. cases they care for farm animals, horses or zoo animals.

Zookeeper: Zookeepers look after animals in zoos, wildlife parks and safari parks. They care for a diverse range of animals from large and dangerous to rare and exotic.

Resources:

Routine cards

Variety of materials

Elastic/string

Whiteboard & pen

Nocturnal or not wheel

Activity:

Everyday I'm...

Describe what an everyday routine is then sort the everyday routines cards in the order day to night and then night to day.

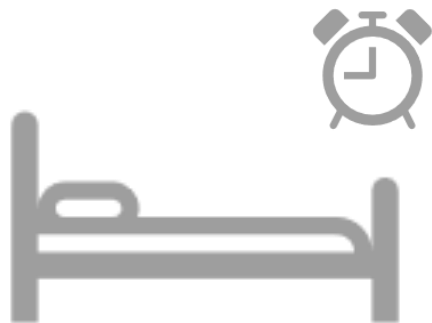
Lights Out

Design and create an eye mask which keeps the light out to help Arlo sleep. What materials work best.

Night & Day

Compare night and day by investigating animals. Sort the picture cards (there may be a number of different ways). What do is similar and what is different? Explain the difference between nocturnal and non-nocturnal animals.

Get up



 aStory

Go home



 aStory

Go to bed



 aStory

Eat dinner



 aStory

Go to school



 aStory

Eat breakfast



 aStory

Step 1

Step 2

Step 3

Step 4

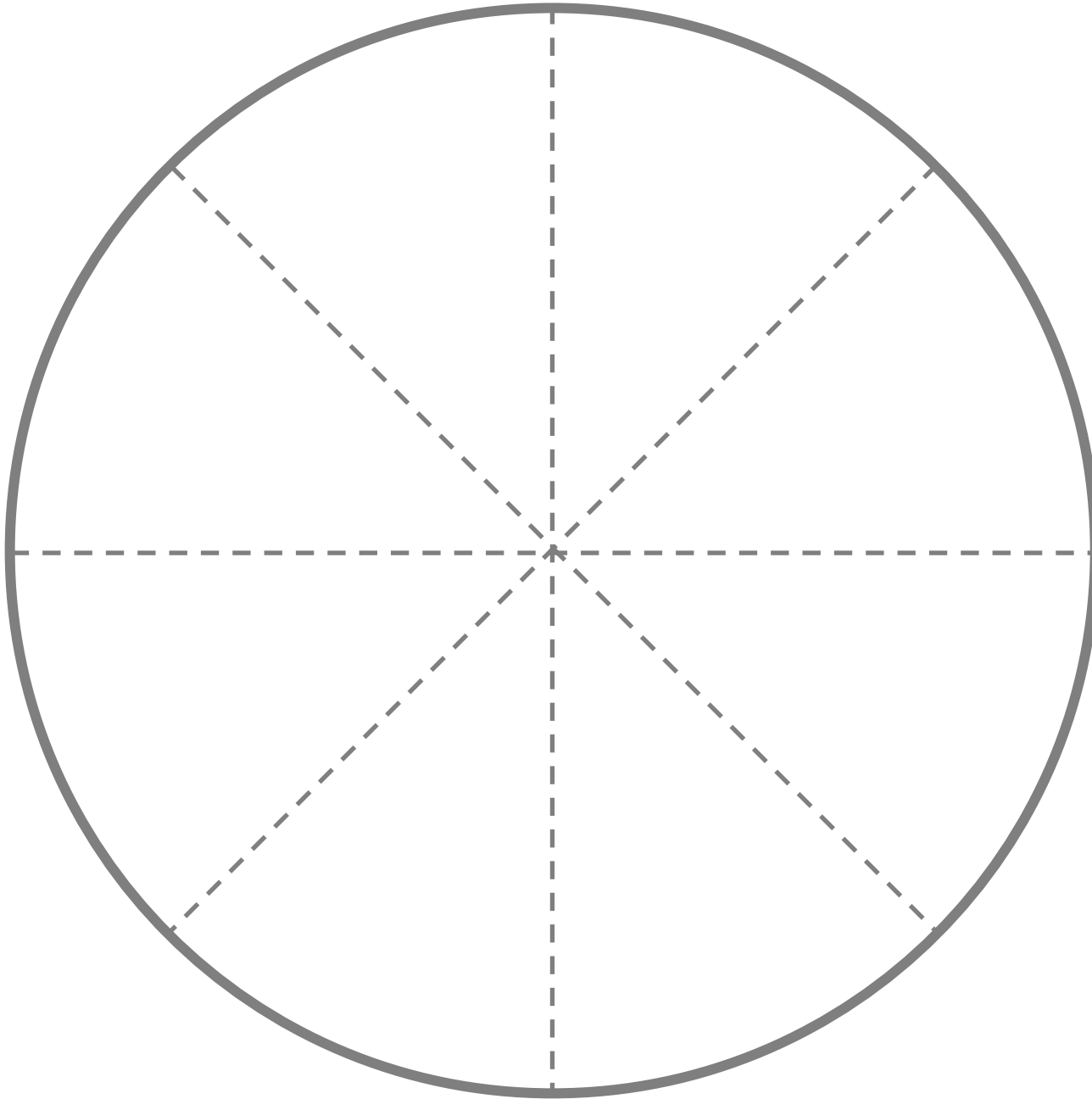
Step 5

Step 6

Nocturnal Animals

Nocturnal animals are active at night-time and asleep during the day.

Using the sector cut outs identify all of the nocturnal animals and fill in the circle to the left.





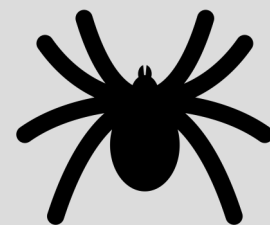
Mouse



Owl



Fox



Spider



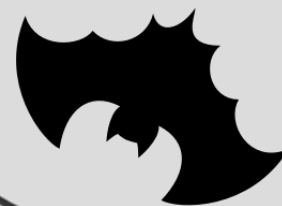
Frog



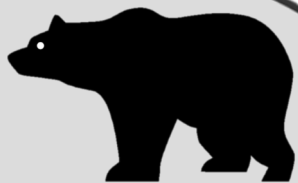
Badger



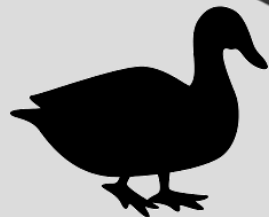
Hedgehog



Bat



Bear



Duck



Lizard



Butterfly



Rabbit



Human

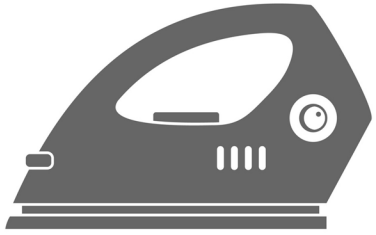


Horse



Dog

Iron



Spring



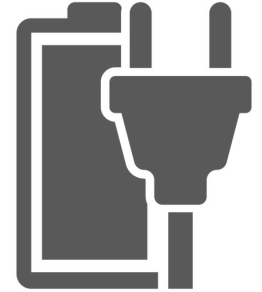
Mousetrap



Guitar



Rechargeable Battery



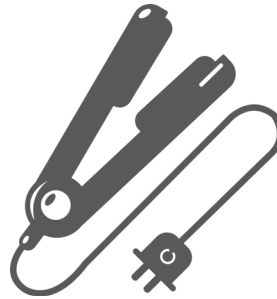
Lamp



Wireless Radio

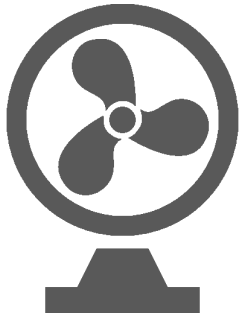


Hair Straighteners



 aStory

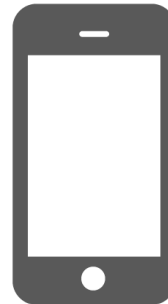
Fan



Kettle



Phone/Tablet



Football



Bow and Arrow

